

# Too Cool T-shirt Quilts®

## Concert T-shirt Quilt Buyer's Guide

A T-shirt quilt made from your concert T-shirts is a wonderful way of preserving your memories from all the concerts you have attended and all the bands you love. Too Cool T-shirt Quilts® is the leading maker of concert T-shirt quilts. Having made thousands of quilts, we understand the level of knowledge you need to have in order to make informed decisions about transforming your T-shirts into a cherished quilt. That's why we have written this guide. We have gathered answers to the most important questions customers ask about having a concert T-shirt quilt made. Hopefully, this guide will answer your questions about concert T-shirt quilts.



You are more than welcome to call us here at Too Cool T-shirt Quilts® with any questions you have about your T-shirt quilt.

517-541-8225

[Info@TooCoolTshirtQuilts.com](mailto:Info@TooCoolTshirtQuilts.com)

# Table of Contents

|                                                                                         |    |
|-----------------------------------------------------------------------------------------|----|
| How many T-shirts do I need to make a concert T-shirt quilt? .....                      | 3  |
| How do I choose which shirts to put in my concert T-shirt quilt? .....                  | 4  |
| Should I use the sides of the T-shirts that include the tour dates? .....               | 6  |
| How do I get more T-shirts to make a concert T-shirt quilt the size I would like? ..... | 7  |
| Most, but not all my T-shirts are black. Should I include the non-black T-shirts? ..... | 8  |
| How do I choose the color for the backing and the binding? .....                        | 10 |
| Why should I have my concert T-shirt quilt made by Too Cool T-shirt Quilts®? .....      | 11 |
| What's the next step? .....                                                             | 13 |





# How many T-shirts do I need to make a concert T-shirt quilt?

The designs on concert T-shirts are much larger than normal T-shirts. In fact, the design sizes of concert T-shirts are 25% to 50% larger than typical T-shirts. This means that when you are planning your concert T-shirt quilt, you will need fewer T-shirts than the [How Many T-shirt](#) page on our website indicates.

If you are not sure, cut the number of T-shirts you plan for the quilt in half. So if the quilt size calls for twenty T-shirts, send us just ten. If you have other T-shirts that you would like to put into the quilt if there is room, put those T-shirts in a separate bag. Label that bag “extras – use if needed”. We will cut the first set of T-shirts and then calculate the quilt size. If we need additional T-shirts to make your quilt the size you want, we will work from the second bag until we get to that size.



## How do I choose which shirts to put in my concert T-shirt quilt?

A T-shirt quilt tells a story. Your Concert T-shirt quilt will tell a story about your love of music and concerts you have attended. So you would want to include those T-shirts that help tell the story. T-shirts you may want to include are from concerts and other musical artist. You would not want to include T-shirts that don't add to your story. For example, you wouldn't want to include one T-shirt from your days running high school track.

Concert T-shirts can be divided into many different categories such as; band, era, genre, artist, or all of these categories can be mixed and matched. When deciding which T-shirts you want to put into your concert T-shirt quilt, the first thing you need to decide is which category or combination of categories you would like to use. Selecting a category or categories may allow you to weed out enough T-shirts to reach the size of quilt you would like.





If there are still too many T-shirts for the size you desire, we suggest giving the T-shirts a priority status. First, make a pile of T-shirts that must be in your quilt. Then, make a second pile of T-shirts that you would really like to be in the quilt, but would be okay with if they did not make it. The remaining T-shirts can then be either weeded-out or made into a third pile to be used if necessary after all of the other T-shirts have been used. When you send your T-shirts in to be made into your quilt, separate these piles into individual plastic bags and note on the bags to use first, second and last.

After all your separating, if there are still too many T-shirts for the size of quilt you had initially desired, consider going up to the next quilt size, having two quilts made, or having a quilt and a pillow made.

If you don't have enough T-shirts to make the quilt size you would like, then consider a smaller quilt, a pillow or adding a border to make your quilt larger.



## Should I use the sides of the T-shirts that include the tour dates?

Concert T-shirts usually have a large front and back design. However, the backs of concert T-shirts are often tour dates. Some are mixed with images and others are just text. Consider if you need both the front and back of the T-shirt included in your quilt to tell your story. You will be able to include more T-shirts if you eliminate the tour dates. We make concert T-shirts with and without tour dates. There is no right or wrong answer about using tour dates; we just want to make sure you have all the information you need to plan your quilt.

There may be some parts of your T-shirts that you may wish to exclude from the quilt. If so, "X" out the parts you DO NOT want with blue painter's tape. We will use all the graphics on a T-shirt that are not X'd out. Remember, once a shirt is included in a quilt, it is impossible to remove.





# How do I get more T-shirts to make a concert T-shirt quilt?

There are a few ways to gather more T-shirts for a concert T-shirt quilt:

1. Attend more concerts.
2. Ask those you went to the concert with for their concert T-shirt.
3. Look on eBay or other auction sites for concert T-shirts from concerts you attended.
4. Go to the band's web site and look to see if they sell concert T-shirts.
5. Buy generic band T-shirts of an artist you saw in concert, but are unrelated to that particular concert tour.



## Most, but not all my T-shirts are black. Should I include the non-black T-shirts?

There are several things to consider when deciding to include T-shirts that are a different color than the majority of the other T-shirts. When a quilt is made from T-shirts, which are all one color, all black for instance, then that quilt is called a monochromatic quilt. We often see monochromatic quilts when making concert T-shirt quilts because many concert T-shirts tend to be black. The main consideration when planning a monochromatic concert quilt is whether or not any different colored T-shirts are important enough that you should break the monochromatic color scheme.



If, when you look at the stack of your T-shirts, there is a mix of blacks, grays, whites and colored shirts or a balance of blacks and grays, then great! However, if all your T-shirts are black, except one or two of them, you need to consider if you want to use those different colored T-shirts. If there are only one or two spots of white, gray, or color in your all black quilt, they will stick out. Your eye will be drawn to the white blocks and the black ones will become the background.



There are no right or wrong answers, just decisions about how you want your quilt to look. Over 25 years of experience has given us insight about not just how to make a T-shirt quilt, but how to make it look great. If you are unsure if you have enough non-black T-shirts to be balanced with the black, let us know when you send your T-shirts. We can take a look at the T-shirts before we begin cutting them and determine if you have enough to balance out the black T-shirts.



## How do I choose the color for the backing and the binding?

There are several ways to choose the color for the backing and binding of your T-shirt quilt:

1. Choose your favorite colors. This method is often used, but may not always directly correlate with the colors of the quilt.
2. Choose the backing and binding colors from the colors of your favorite T-shirt within the quilt. You can mark that shirt with a note on blue painter's tape so that we can match the colors as close as possible.
3. You can also ask Too Cool T-shirt Quilts® to give you a suggestion. We will use the colors in your T-shirts to make our suggestions. We will give you a number of suggestions and, then, you can make the final decision.



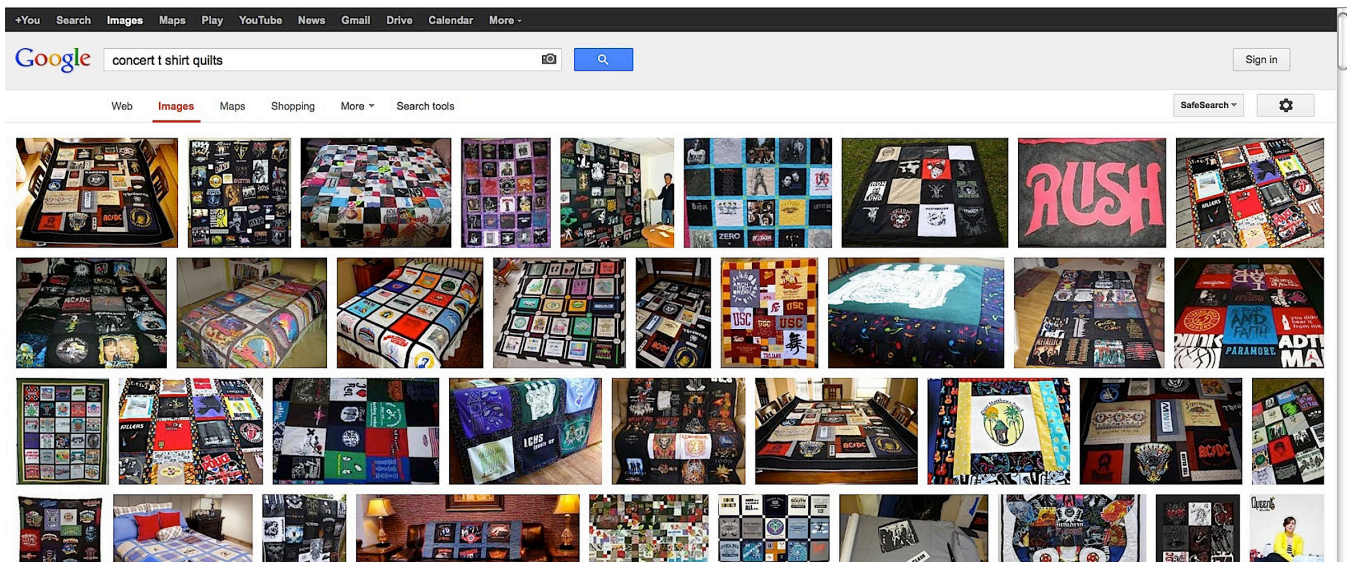


# Why should I have my concert T-shirt quilt made by Too Cool T-shirt Quilts®?

Have you done a Google Image search for [concert T-shirt Quilts](#)? If so, you will know that nearly all the quilts look like checker boards. They are not cool. Heck, they aren't even interesting! Your T-shirts are cool and interesting. So why should your quilt be boring and just like anyone else's quilt?

Too Cool T-shirt Quilts® can take your concert T-shirts and turn them into a work of art. Some of the great things that make a Too Cool T-shirt Quilt® interesting are:

- All the blocks are cut to fit the design on the T-shirt. Many concert T-shirts have very large designs. Why would you want the design cut off to fit a predetermined block size?



- We can use more than just the front or back of the T-shirt. We can use the front, back and sleeves. We can use anything in your quilt that you can wash in a washing machine. Think beyond the T-shirt.
- Each block is individually quilted. Most other quilters will just turn on their computer-ized long arm sewing machine, then walk away and let their computer quilt your quilt. Here at Too Cool T-shirt Quilts®, an artist does the quilting. Your quilt will be as unique as you are.
- When we are quilting, we will trace some of the designs on the T-shirts so you can see the design on the back of the quilt too. This is so cool. If you are like most people when seeing the quilting on the back of a Too Cool T-shirt Quilts®, it will knock your socks off!

Don't just trust your T-shirts to anyone with a pair of scissors and a sewing machine. It takes experience and skill to make an awesome T-shirt quilt. Too Cool T-shirt Quilts® is the right company to make your concert T-shirts into a quilt.





# What's the Next Step?

We hope that this guide has helped you think about what you want in a T-shirt quilt. What's your next step? Below are a number of links for you.

[Learn How to Have  
a Quilt Made](#)

[Contact  
Too Cool T-shirt Quilts®](#)

[Back to  
Too Cool T-shirt Quilts®](#)

